



EQUAL TEES

PT16 - 16mm x 16mm x 16mm
PT20 - 20mm x 20mm x 20mm
PT25 - 25mm x 25mm x 25mm



REDUCING TEES

PTR112 - 16mm x 16mm x 20mm
PTR211 - 20mm x 16mm x 16mm
PTR212 - 20mm x 16mm x 20mm
PTR221 - 20mm x 20mm x 16mm



REDUCING TEES

PTR522 - 25mm x 20mm x 20mm
PTR525 - 25mm x 20mm x 25mm
PTR551 - 25mm x 25mm x 16mm
PTR552 - 25mm x 25mm x 20mm



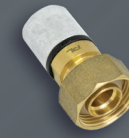
INLINE COPPER TO PEX PIPE TEE

PTC16B - 1/2" BSP x 1/2" BSP x 16mm to fit 15mm Cu.



STRAIGHT FEMALE SWIVELS

PF325 - 3/4" BSP x 25mm
PF125 - 1" BSP x 25mm



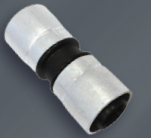
BRASS FEMALE SWIVELS

PF16B - 1/2" BSP x 16mm
PF20B - 3/4" BSP x 20mm



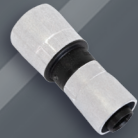
BRASS REDUCING FEMALE SWIVEL

PF2016B - 3/4" BSP x 16mm



INLINE COUPLINGS

PS16 - 16mm x 16mm
PS20 - 20mm x 20mm
PS25 - 25mm x 25mm



REDUCING COUPLINGS

PS2016 - 20mm x 16mm
PS2520 - 25mm x 20mm



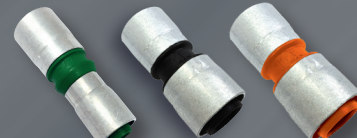
BRASS MALE ADAPTORS

PM16B - 1/2" BSP x 16mm
PM20B - 3/4" BSP x 20mm
PM2016B - 3/4" BSP x 16mm



FEMALE BRAZING TAILS

PBTF16 - 1/2" NZ Cu x 16mm
PBTF20 - 3/4" NZ Cu x 20mm



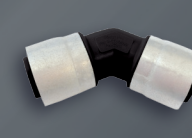
POLYMER TRANSITION FITTINGS

PPB1612 - 16mm PEX x 12mm PB
PPB1615 - 16mm PEX x 15mm PB
PPX1616 - 16mm PEX x 16mm PN20 PEX
PPB2020 - 20mm PEX x 20mm PB
PPX2020 - 20mm PEX x 20mm PN20 PEX
PPB2528 - 25mm PEX x 28mm PB
PPX2525 - 25mm PEX x 25mm PN20 PEX



EQUAL ELBOWS

PE16 - 16mm x 16mm
PE20 - 20mm x 20mm
PE25 - 25mm x 25mm



45 DEGREE ELBOWS

PE4516 - 16mm x 16mm
PE4520 - 20mm x 20mm
PE4525 - 25mm x 25mm



BRASS FEMALE SWIVEL ELBOWS

PFE16B - 1/2" BSP x 16mm
PFE20B - 3/4" BSP x 20mm
PFE1620B - 1/2" BSP x 20mm



BRASS M&F ELBOW

MFE1C - Male 1/2" BSP x Female 1/2" BSP



BRASS MALE ELBOW

PME16B - 1/2" BSP x 16mm



HOSE PLATE

PHP16 - 1/2" BSP x 16mm



FEMALE WING BACK ELBOWS

PWE16 - 1/2" BSP x 16mm
PWE20 - 3/4" BSP x 20mm
PWE2016 - 3/4" BSP x 16mm
PWE25 - 1" BSP x 25mm



DOUBLE FIX FEMALE WING BACK ELBOW

PWED16 - 1/2" BSP x 16mm



TOP FIX FEMALE WING BACK ELBOWS

PWET16 - 1/2" BSP x 16mm
PWET20 - 3/4" BSP x 20mm



MALE WING BACK ELBOWS

PWM16 - 1/2" BSP x 16mm x 70mm
PWM100 - 1/2" BSP x 16mm x 100mm
PWM200 - 1/2" BSP x 16mm x 200mm
PWM202 - 3/4" BSP x 20mm x 200mm



TOP FIX MALE WING BACK ELBOWS

PWMT216 - 1/2" BSP x 16mm x 200mm
PWMT220 - 3/4" BSP x 20mm x 200mm



PIPE END PLUGS

PPG16 - 16mm
PPG20 - 20mm
PPG25 - 25mm



MASONRY NAIL PIPE CLIPS

PBA16 - 16mm
PBA20 - 20mm
PBA25 - 25mm



CONCRETE NAIL PIPE CLIPS WITH ANCHOR

PBA16A - 16mm
PBA20A - 20mm



PEXLINE PIPE

PXC16 - 16mm x 50m Coil
PXC16100 - 16mm x 100m Coil
PXC20 - 20mm x 50m Coil
PXC20100 - 20mm x 100m Coil
PXC25 - 25mm x 50m Coil
PXL16 - 16mm x 5m Lengths
PXL20 - 20mm x 5m Lengths
PXL25 - 25mm x 5m Lengths



PEXLINE PIPE FOR HOT WATER

PCH16 - 16mm x 50m Coil
PCH20 - 20mm x 50m Coil
PLH16 - 16mm x 5m Lengths
PLH20 - 20mm x 5m Lengths



GREY WATER / RECYCLED WATER PEXLINE PIPE

PCL16 - 16mm x 50m Coil
PCL20 - 20mm x 50m Coil
PLL16 - 16mm x 5m Lengths
PLL20 - 20mm x 5m Lengths



PEXLINE PIPE IN CONDUIT

PXC16C - 16mm x 50m Coil
PXC20C - 20mm x 50m Coil



PIPE BEND SUPPORTS

PBS16 - 16mm
PBS20 - 20mm
PBS25 - 25mm



PROCLAMP TOOLS

PROX16 - 16mm
PROX20 - 20mm

Includes checking gauge.



CLAMP TOOL

FRX25 - 25mm

Includes checking gauge.



ELECTRIC CLAMP TOOL & JAWS

PET01 - Boxed kit includes tool with battery, charger and a set of 3 jaws.
PETJ16 - 16mm jaws
PETJ20 - 20mm jaws
PETJ25 - 25mm jaws

Jaws for the electric tool are also available individually for purchase.



PIPE CUTTER

PC30 (Yellow)



PEXLINE FITTINGS CASES

PEXFC - A quality fittings case with a selection of Pexline fittings.
PEXC - This tough and durable tradesman's case is also available empty.