



EQUAL TEES

T15 - 15mm x 15mm x 15mm
T20 - 20mm x 20mm x 20mm



REDUCING TEES

TR112 - 15mm x 15mm x 20mm
TR211 - 20mm x 15mm x 15mm
TR212 - 20mm x 15mm x 20mm
TR221 - 20mm x 20mm x 15mm



INLINE COPPER TO PB PIPE TEE

TC15 - 1/2" BSP x 1/2" BSP x 15mm to fit 15mm copper

BRASS INLINE COPPER TO PB PIPE TEE

TC15B - 1/2" BSP x 1/2" BSP x 15mm to fit 15mm copper



COPPER TO PB PIPE TEE

TK15 - 15mm x 15mm x 1/2" BSPT to fit 15mm copper



EQUAL CROSSES

CX40 - All 15mm
CX48 - All 20mm

REDUCING CROSSES

CX42 - 20mm x 20mm x 20mm x 15mm
CX44 - 20mm x 15mm x 20mm x 15mm
CX46 - 20mm x 15mm x 15mm x 15mm



FEMALE SWIVELS

F15 - 1/2" BSP x 15mm
F20 - 3/4" BSP x 20mm
F2015 - 3/4" BSP x 15mm

CHROMED FEMALE SWIVEL

F15C - 1/2" BSP x 15mm



BRASS FEMALE SWIVELS

F15BX - 1/2" BSP x 15mm
F20BX - 3/4" BSP x 20mm
F2015BX - 3/4" BSP x 15mm



FIXED FEMALES

FF15B - 1/2" BSP x 15mm
F20B - 3/4" BSP x 20mm



INLINE COUPLINGS

S15 - 15mm x 15mm
S20 - 20mm x 20mm

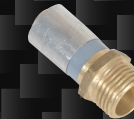
REDUCING COUPLING

S2015 - 20mm x 15mm



MALE ADAPTORS

M15 - 1/2" BSPT x 15mm
M20 - 3/4" BSPT x 20mm
M2015 - 3/4" BSPT x 15mm



BRASS MALE ADAPTORS

M15B - 1/2" BSP x 15mm
M20B - 3/4" BSP x 20mm



BRASS LUGGED MALE ADAPTOR

ML15B - 1/2" BSP x 15mm

MALE ADAPTOR

M20C - 3/4" BSPT x 20mm to fit 20mm copper



FEMALE BRAZING TAILS

BTF15 - 15mm
BTF20 - 20mm

For when brazing to copper.



EQUAL ELBOWS

E15 - 15mm x 15mm
E20 - 20mm x 20mm

REDUCING ELBOW

E2015 - 20mm x 15mm



45° ELBOWS

E4515 - 15mm x 15mm
E4520 - 20mm x 20mm



FEMALE SWIVEL ELBOWS

FE15 - 1/2" BSP x 15mm
FE20 - 3/4" BSP x 20mm

CHROMED FEMALE SWIVEL ELBOW

FE15C - 1/2" BSP x 15mm



BRASS FEMALE SWIVEL ELBOWS

FE15BX - 1/2" BSP x 15mm
FE20BX - 3/4" BSP x 20mm



FIXED FEMALE ELBOW

FFE15B - 1/2" BSP x 15mm



MALE ELBOW

ME15 - 1/2" BSPT x 15mm

BRASS MALE ELBOW

ME15B - 1/2" BSP x 15mm



M&F WHITE FINISHING EXT ELBOW

BMF60 - Male 1/2" BSP x Female 1/2" BSP



HOSE PLATES

HP15 - 1/2" BSP x 15mm
HP22 - 3/4" BSP x 20mm



FEMALE WING BACK ELBOWS

WE15 - 1/2" BSP x 15mm
WE20 - 3/4" BSP x 20mm
WE2015 - 3/4" BSP x 15mm

NEW!



DOUBLE FIX FEMALE WING BACK ELBOW

WED15 - 1/2" BSP x 15mm



TOP FIX FEMALE WING BACK ELBOWS

WET15 - 1/2" BSP x 15mm
WET20 - 3/4" BSP x 20mm



MALE WING BACK ELBOWS

WM15 - 1/2" BSP x 15mm x 70mm
WM100 - 1/2" BSP x 15mm x 100mm



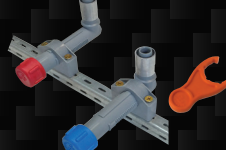
TOP FIX MALE WING BACK ELBOWS

WMT215 - 1/2" BSP x 15mm x 200mm
WMT220 - 3/4" BSP x 20mm x 200mm



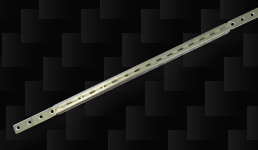
LUGGED ELBOWS

BLE70 - 1/2" BSPT x 15mm x 70mm
BLE100 - 1/2" BSPT x 15mm x 100mm
Includes test cap and spanner.



BUTE-1 Adjustable 1/2" BSP Male Wall Elbow

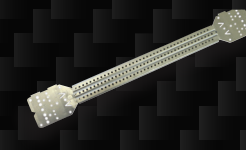
BUTE1 - 1/2" BSP x 15mm x 70mm
BUTE1EX - 1/2" BSP x 15mm x 100mm
Includes telescopic steel brackets, test caps (hot & cold) and palm spanner.



BUTE-1 TELESCOPIC NOG BRACKET

Telescopic galvanized steel bracket supports BUTE-1. Ideal for timber or steel frame projects.

BK2 - 330mm to 610mm



TELESCOPIC NOG BRACKETS

Telescopic galvanized steel bracket supports brass wing backs and Polymer Lugged Elbows (BLE's). Ideal for timber or steel frame projects.

BK3 - 260mm to 400mm
BK4 - 355mm to 610mm



FLEXI HOSES

1/2" BSP x 1/2" BSP x 300mm

FPE300 - Elbow Flexi Hose, Bute Nuts
FPS300 - Straight Flexi Hose, Bute Nuts



EXTENDED TEST PLUG

BP15 - 1/2" BSP Test Plug with self sealing drain cap.

TEST PLUG

PH15 - 1/2" BSPT



PIPE END PLUGS

PG15 - 15mm
PG20 - 20mm



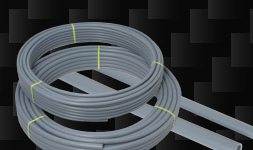
NAIL / METAL SCREW PIPE CLIPS

Nail Metal Screw
BA18 - 18mm BAS18 - 18mm
BA22 - 22mm BAS22 - 22mm



PIPE CLIPS FOR HOT WATER LINE

BAR18 - 18mm
BAR22 - 22mm



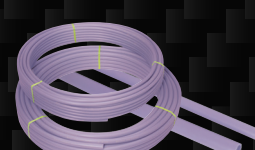
PB-1 PIPE

BC18 - 18mm x 50m Coil
BC22 - 22mm x 50m Coil
BL18 - 18mm x 5m Lengths
BL22 - 22mm x 5m Lengths



LAY FLAT PB-1 PIPE COILS

BSC18 - 5 x 18mm x 10m Lengths
BSC22 - 5 x 22mm x 10m Lengths



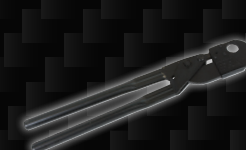
GREY WATER / RECYCLED WATER PB-1 PIPE

BCR18 - 18mm x 50m Coil
BCR22 - 22mm x 50m Coil
BLR18 - 18mm x 5m Lengths
BLR22 - 22mm x 5m Lengths



RAINWATER PB-1 PIPE

BCG18 - 18mm x 50m Coil
BCG22 - 22mm x 50m Coil
BLG18 - 18mm x 5m Lengths
BLG22 - 22mm x 5m Lengths



CLAMP TOOLS

FR20 - 15mm
FR25 - 20mm



PROCLAMP TOOLS

PRO18 - 15mm
PRO22 - 20mm

Includes checking gauge.



QUICKCLAMP MINI TOOL

QC20 - 15mm

Includes checking gauge.



ELECTRIC CLAMP TOOL & JAWS

ET01 - Boxed kit includes tool with battery, charger and a set of 3 jaws (as below).

ET18 - 15mm jaws
ETJ22 - 20mm jaws
ETJ28 - 28mm jaws

Jaws for the electric tool are also available individually for purchase.



BUTE TOOL BELT

BTB10 - Designed to fit your Bute ProClamp tools, Bute fittings, tape measure, hammer, pencil and ruler.



BUTE GETS YOU GOING PACK

GG01 - 2 clamp tools (15mm & 20mm), a pipe cutter, and a selection of the most popular fittings.



BUTE PRO STARTER PACK

BPP10 - 2 ProClamp Tools (15mm & 20mm), a pipe cutter, and a selection of useful fittings.



BUTE FITTINGS CASES

BUTEFC - A quality fittings case with Buteline product (pictured).
BUTEC - This tough and durable tradesman's case is also available empty.



PIPE CUTTER

PC30 (Yellow)

BUTELINE

PLUMBING SYSTEM

12mm Range



EQUAL TEE
T12 - 12mm x 12mm x 12mm



REDUCING TEES
TR001 - 12mm x 12mm x 15mm
TR002 - 12mm x 12mm x 20mm
TR110 - 15mm x 15mm x 12mm
TR220 - 20mm x 20mm x 12mm



FEMALE SWIVEL
F12 - 1/2" BSP x 12mm



INLINE COUPLING
S12 - 12mm x 12mm



REDUCING COUPLINGS
S1512 - 15mm x 12mm
S2012 - 20mm x 12mm



BRASS MALE ADAPTOR
M12B - 1/2" BSP x 12mm



EQUAL ELBOW
E12 - 12mm x 12mm



FEMALE SWIVEL ELBOW
FE12 - 1/2" BSP x 12mm



FEMALE WING BACK ELBOW
WE12 - 1/2" BSP x 12mm



MALE WING BACK ELBOW
WM12100 - 1/2" BSP x 12mm x 100mm



PIPE END PLUG
PG12 - 12mm



NAIL PIPE CLIP
BA12 - 12mm



PB-1 PIPE COILS
BC12 - 12mm x 25m Coil
BC12100 - 12mm x 100m Coil



PB-1 PIPE LENGTHS
BL12 - 12mm x 5m Lengths



PIPE CUTTER
PC30 (Yellow)



QUICKCLAMP MINI TOOL
QC12 - 12mm
Includes checking gauge.



BUTE FITTINGS CASES
BUTEFC12 - A smaller fittings case with a selection of Bute 12mm fittings.
BUTEC12 - This smaller fittings case is also available empty.

28mm Range



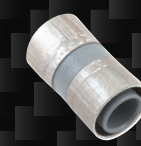
EQUAL TEE
T305 - 28mm x 28mm x 28mm



REDUCING TEES
TR334 - 28mm x 28mm x 20mm
TR335 - 28mm x 20mm x 20mm
TR336 - 28mm x 20mm x 28mm
TR337 - 28mm x 28mm x 15mm



FEMALE SWIVELS
SF350 - 3/4" BSP x 28mm
SF450 - 1" BSP x 28mm



INLINE COUPLING
S105 - 28mm x 28mm



REDUCING COUPLING
SR125 - 28mm x 20mm



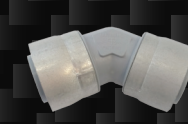
MALE ADAPTORS
SM174 - 3/4" BSPT x 28mm
SM175 - 1" BSPT x 28mm



EQUAL ELBOW
E205 - 28mm x 28mm



REDUCING ELBOW
ER224 - 28mm x 20mm



45° ELBOW
E4528 - 28mm x 28mm



FEMALE SWIVEL ELBOWS
EF351 - 3/4" BSP x 28mm
EF451 - 1" BSP x 28mm



MALE ELBOWS
EM274 - 3/4" BSPT x 28mm
EM275 - 1" BSPT x 28mm



FEMALE WING BACK ELBOW
WE28 - 1" BSP x 28mm



PIPE END PLUG
PEP405 - 28mm



NAIL / METAL SCREW PIPE CLIPS
Nail BA28 - 28mm Metal Screw BAS28 - 28mm



PB-1 PIPE
BL28 - 28mm x 5m Lengths



PIPE CUTTER
PC30 (Yellow)



CLAMP TOOL
FR28 - 28mm



ELECTRIC CLAMP TOOL & JAWS
ET01 - Boxed kit includes tool with battery, charger and a set of 3 jaws (as below).
ET18 - 15mm jaws
ET22 - 20mm jaws
ET28 - 28mm jaws
Jaws for the electric tool are also available individually for purchase.

Plumbers Technical & Installation Manual available online.



0800 BUTELINE www.buteline.com

